

---

# Yealink Phonebook Generation Tool User Guide

---

## SOFTWARE LICENSE AGREEMENT

SOFTWARE LICENSE AGREEMENT FOR YEALINK PHONEBOOK GENERATION TOOL IS IMPORTANT. PLEASE READ THIS LICENSE AGREEMENT CAREFULLY BEFORE CONTINUING WITH THIS PROGRAM: YEALINK(XIAMEN) NETWORK TECHNOLOGY CO., LTD Software License Agreement (SLA) is a legal agreement between you (either an individual or a single entity) and Yealink(Xiamen) Network Technology CO., LTD. For the Yealink software product(s) identified above which may include associated software components, media, printed materials, and "online" or electronic documentation ("SOFTWARE PRODUCT"). By installing, copying, or otherwise using the SOFTWARE PRODUCT, you agree to be bound by the terms of this SLA. This license agreement represents the entire agreement concerning the program between you and Yealink(Xiamen) Network Technology CO., LTD., (referred to as "licenser"), and it supersedes any prior proposal, representation, or understanding between the parties. If you do not agree to the terms of this SLA, do not install or use the SOFTWARE PRODUCT.

The SOFTWARE PRODUCT is protected by copyright laws and international copyright treaties, as well as other intellectual property laws and treaties. The SOFTWARE PRODUCT is licensed, not sold.

## COPYRIGHT

All title, including but not limited to copyrights, in and to the SOFTWARE PRODUCT and any copies thereof are owned by Yealink(Xiamen) Network Technology CO., LTD. or its suppliers. All title and intellectual property rights in and to the content which may be accessed through use of the SOFTWARE PRODUCT is the property of the respective content owner and may be protected by applicable copyright or other intellectual property laws and treaties. This EULA grants you no rights to use such content. All rights not expressly granted are reserved by Yealink(Xiamen) Network Technology CO., LTD.

## WARRANTIES

THE SPECIFICATIONS AND INFORMATION REGARDING THE PRODUCTS IN THIS GUIDE ARE SUBJECT TO CHANGE WITHOUT NOTICE. ALL STATEMENTS, INFORMATION, AND RECOMMENDATIONS IN THIS GUIDE ARE BELIEVED TO BE ACCURATE BUT ARE PRESENTED WITHOUT WARRANTY OF ANY KIND, EXPRESS OR IMPLIED. USERS MUST TAKE FULL RESPONSIBILITY FOR THEIR APPLICATION OF PRODUCTS. YEALINK(XIAMEN) NETWORK TECHNOLOGY CO., LTD. MAKES NO WARRANTY OF ANY KIND WITH REGARD TO THIS GUIDE, INCLUDING, BUT NOT LIMITED TO, THE IMPLIED WARRANTIES OF MERCHANTABILITY AND FITNESS FOR A PARTICULAR PURPOSE. Yealink(Xiamen) Network Technology CO., LTD. shall not be liable for errors contained herein nor for incidental or consequential damages in connection with the furnishing, performance, or use of this guide.



## Introduction

Yealink phonebook generation tool is developed for automatically generating contact files available for Yealink IP phones. This tool is developed by Yealink. You can ask the distributor or the Yealink Field Application Engineer for this tool, or you can download it from website at: <http://support.yealink.com/documentFront/forwardToDocumentFrontDisplayPage>.

The information applies to the following Yealink IP phones:

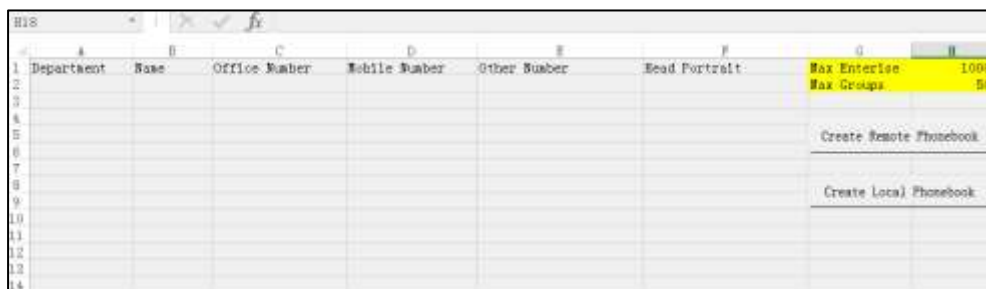
- SIP-T46G, SIP-T42G, SIP-T41P and CP860 IP phones running firmware version 71 or later
- SIP-T48G IP phones running firmware version 72 or later
- SIP-T58V/A, SIP-T56A, SIP VP-T49G, SIP-T40P, SIP-T29G, SIP-T27P, SIP-T23P/G, SIP-T21(P) E2, SIP-T19(P) E2, CP960 and W56P IP phones running firmware version 80 or later
- SIP-T54S, SIP-T52S, SIP-T48S, SIP-T46S, SIP-T42S, SIP-T41S, SIP-T40G, SIP-T27G, CP920, W52P and W60 IP phones running firmware version 81 or later

### Note

Compatible operating systems: Win XP/64-bit version of Win7/64-bit version of Win8.  
Compatible excel: Microsoft Excel 2003 (32-bit or 64-bit).

## Interface Description

Double click the application file to start the phonebook generation tool. This tool bases on the Microsoft Excel table. The screenshot of the main page is shown as below:



The first line includes the contact parameters configurable for Yealink IP phones. All these parameter names are encrypted and cannot be modified.

Users can use this tool to generate a local contact file or a remote phonebook file, and then import the contact file by auto provisioning to add contacts in bulk. For information about contacts on Yealink IP phones, please refer to [Yealink phone-specific user guide](#).

The following table lists the contact parameters:

Department	
<b>Description</b>	This parameter specifies the group name of the contact.
<b>Format</b>	String
<b>Maximum Characters</b>	99
<b>Maximum Groups</b>	<p><b>To generate a local contact file:</b></p> <p>Yealink SIP-T48G/T46G/T42G/T41P/CP860 IP phones support up to 48 local contact groups, including the default <b>Company, Family, Friend</b> groups. The three groups have been removed from phones running firmware version 80 or later.</p> <p>Yealink SIP-T58V/T58A/T56A/SIP VP-T49G/SIP-T54S/T52S/T48S/T46S/T42S/T41S/T40P/T40G/T29G/T27P/T27G/T23P/T23G/T21(P) E2/T19(P) E2/CP920/CP960 IP phones support up to 48 local contact groups.</p> <p>Yealink W60, W52P and W56P IP phones support one group.</p> <p><b>To generate a remote phonebook file:</b></p> <p>Yealink IP phones support up to 50 remote contact groups. There is no default contact group in the remote phonebook.</p>
<b>Note</b>	<p><b>To generate a local contact file:</b></p> <p>If this field is left blank, the contact record will be added in the default local contact group named as <b>All Contacts</b>.</p> <p><b>To generate a remote phonebook file:</b></p> <p>If this field is left blank, the contact record will be ignored in the generated remote phonebook file.</p>
Name	
<b>Description</b>	This parameter specifies the contact name.
<b>Format</b>	String
<b>Maximum Characters</b>	99
<b>Note</b>	<p>If multiple records include the same contact name, only the first record will take effect after importing to Yealink IP phones.</p> <p><b>To generate a local contact file:</b></p> <p>If this field is left blank, the contact record will be ignored in the generated local contact file.</p> <p><b>To generate a remote phonebook file:</b></p> <p>If this field is left blank, the contact name will be null in the generated</p>

	remote phonebook file.
<b>Office Number/Mobile Number/Other Number</b>	
<b>Description</b>	These parameters specify the office/mobile/other numbers of the contact. <b>Note:</b> W52P and W52P IP DECT phones only support office number and mobile number.
<b>Format</b>	String
<b>Maximum Characters</b>	32
<b>Note</b>	Contact Office Number, Mobile Number and Other Number are optional.
<b>Head Portrait (Only apply to T58V/A, T56A, T49G, T48G/S, T46G/S, T29G and CP960 IP phones)</b>	
<b>Description</b>	This parameter specifies the head portrait of the contact.
<b>Format</b>	String
<b>Maximum Characters</b>	32
<b>Value Format</b>	<p><b>To fill a default path:</b></p> <p><b>For SIP-T54S/T52S IP phones:</b></p> <p>Contact.png Blacklist.png Family.png Friend.png</p> <p><b>For SIP-T46G/T46S/T29G IP phones:</b></p> <p>default_contact_image.png icon_family_b.png icon_friend_b.png icon_blacklist_b.png</p> <p><b>For SIP-T48G/S IP phones:</b></p> <p>default_contact_image.png customer.png family.png friend.png</p> <p><b>For SIP VP-T49G IP video phones:</b></p> <p>The default contact image.png bluetooth_default.png</p>


	<p>customer.png</p> <p>family.png</p> <p>friend.png</p> <p><b>For SIP-T58V/T58A/T56A IP phones:</b></p> <p>The default contact image.png</p> <p>customer.png</p> <p>family.png</p> <p>friend.png</p> <p><b>For CP960 IP phones:</b></p> <p>The default contact image.png</p> <p>blacklist.png</p> <p>customer.png</p> <p>family.png</p> <p>friend.png</p> <p><b>To fill a complete path:</b></p> <p>Config:&lt;picturename&gt;.png</p> <p>Config:&lt;picturename&gt;.jpg</p> <p>Config:&lt;picturename&gt;.bmp</p> <p>This means to assign a customized picture for the contact head portrait. The customized picture for the contact head portrait must be imported to the phone in advance.</p>
<b>Note</b>	If this field is left blank, the contact record uses the default head portrait.

## Using the Phonebook Generation Tool

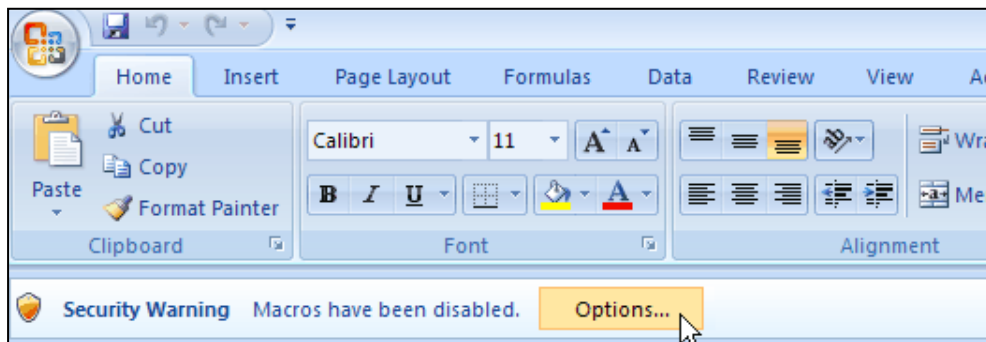
The following shows how to generate a local contact file or a remote phonebook file using the phonebook generation tool.

### Generating a Local Contact File

**To generate a local contact file:**

1. Double click the application file to start the phonebook generation tool.
2. Click on  -> **Save As**.
3. Select **Excel Macro-Enabled Workbook** from the pull-down list of **Save as Type**.
4. Click the **Save** button to save the tool to the local system.
5. Double click to start the phonebook generation tool from the local system.

- Click the **Options...** button beneath the Office ribbon.



- Mark the **Enable this content** radio box in the pop-up dialogue box, and click the **OK** button.
- Fill the value of each contact parameter according to the practical situation.
- Click the **Create Local Phonebook** button to generate the local phonebook file.

The tool prompts a local contact file is generated successfully and the default path is the C root directory "C:\". User can change the stored path. For more information, refer to [Appendix A: Managing the Config.cfg File](#) on page 11.

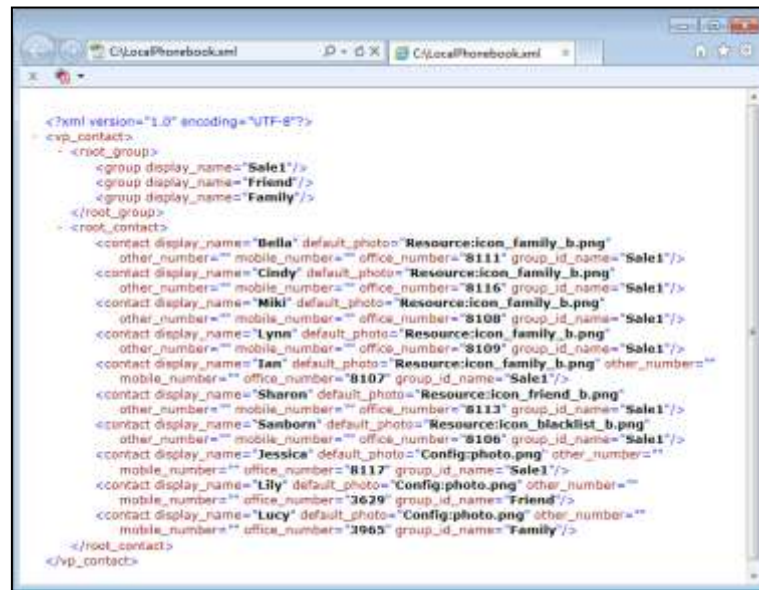


**Note**

If user does not have the write permissions for disk C., the local phonebook file will fail to generate. Please change the stored path or contact your system administrator.

You can then find the local phonebook file in the destination directory.


The following shows an example of LocalPhonebook.xml:

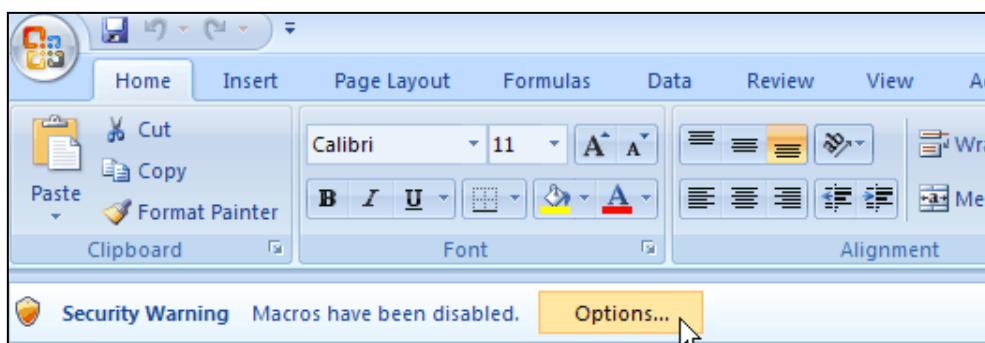


```
<?xml version="1.0" encoding="UTF-8"?>
<vp_contact>
  <root_group>
    <group display_name="Sale1"/>
    <group display_name="Friend"/>
    <group display_name="Family"/>
  </root_group>
</root_contact>
<contact display_name="Bella" default_photo="Resource:icon_family_b.png"
  other_number="" mobile_number="" office_number="8111" group_id_name="Sale1"/>
<contact display_name="Cindy" default_photo="Resource:icon_family_b.png"
  other_number="" mobile_number="" office_number="8116" group_id_name="Sale1"/>
<contact display_name="Miki" default_photo="Resource:icon_family_b.png"
  other_number="" mobile_number="" office_number="8108" group_id_name="Sale1"/>
<contact display_name="Lynn" default_photo="Resource:icon_family_b.png"
  other_number="" mobile_number="" office_number="8109" group_id_name="Sale1"/>
<contact display_name="Jan" default_photo="Resource:icon_family_b.png" other_number=""
  mobile_number="" office_number="8107" group_id_name="Sale1"/>
<contact display_name="Sharon" default_photo="Resource:icon_friend_b.png"
  other_number="" mobile_number="" office_number="8113" group_id_name="Sale1"/>
<contact display_name="Sambora" default_photo="Resource:icons_blacklist_b.png"
  other_number="" mobile_number="" office_number="8106" group_id_name="Sale1"/>
<contact display_name="Jessica" default_photo="Config:photo.png" other_number=""
  mobile_number="" office_number="8117" group_id_name="Sale1"/>
<contact display_name="Lily" default_photo="Config:photo.png" other_number=""
  mobile_number="" office_number="3629" group_id_name="Friend"/>
<contact display_name="Lucy" default_photo="Config:photo.png" other_number=""
  mobile_number="" office_number="3985" group_id_name="Family"/>
</root_contact>
</vp_contacts>
```

## Generating a Remote Phonebook File

To generate a remote phonebook file:

1. Double click the application file to start the phonebook generation tool.
2. Click on  -> **Save As**.
3. Select **Excel Macro-Enabled Workbook** from the pull-down list of **Save as Type**.
4. Click the **Save** button to save the tool to the local system.
5. Double click to start the phonebook generation tool from the local system.
6. Click the **Options...** button beneath the Office ribbon.



7. Mark the **Enable this content** radio box in the pop-up dialogue box, and click the **OK** button.
8. Fill the value of each contact parameter according to the practical situation.
9. Click on the **Create Remote Phonebook** button to generate the remote phonebook file. The default path is the C root directory "C:\". User can change the stored path. For more



information, refer to [Appendix A: Managing the Config.cfg File](#) on page 11.

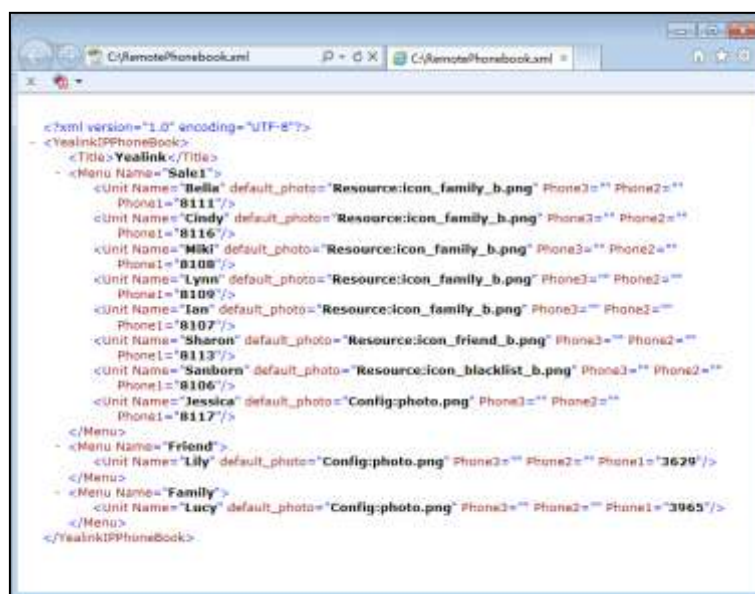


#### Note

If user does not have the write permissions for disk C:, the remote phonebook file will fail to generate. Please change the stored path or contact your system administrator.

You can then find the remote phonebook file in the destination directory.

The following shows an example of RemotePhonebook.xml:



## Uploading Local Contact File via Web User Interface

**To upload the local contact file via web user interface:**

**For SIP-T58V/T58A/T56A/SIP**

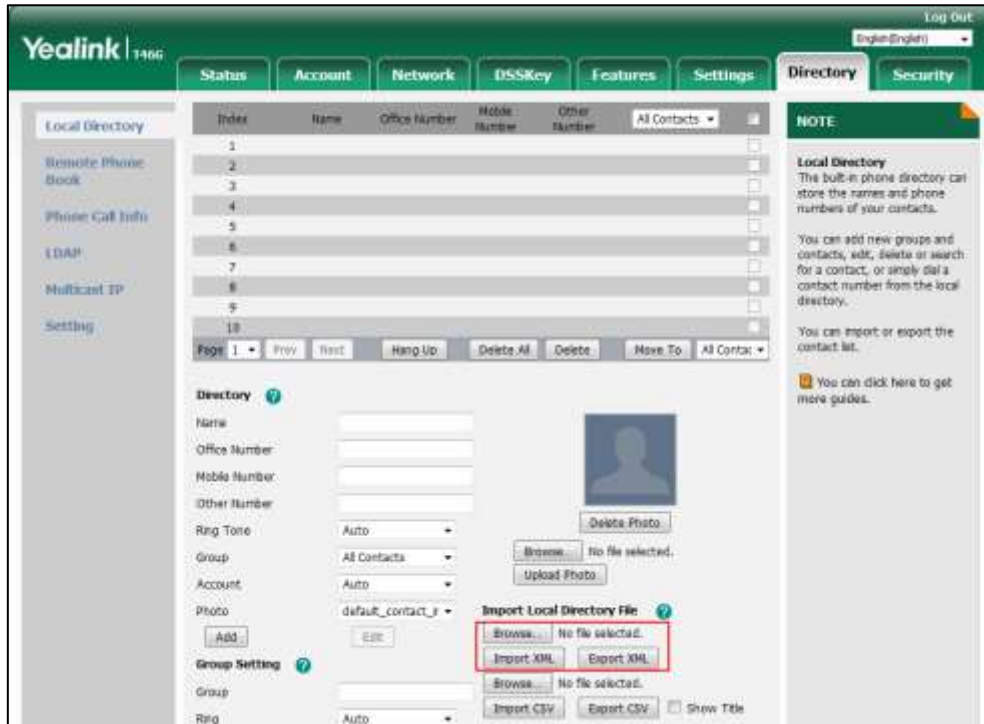
**VP-T49G/SIP-T54S/T52S/T48S/T46S/T42S/T41S/T40P/T40G/T29G/T27P/T27G/T23P/T23G/T21(P) E2/T19(P) E2/CP860/CP920/CP960 IP phones:**

The following takes the SIP-T46G IP phone running firmware version 81 as an example.

1. Press the **OK** key on the phone when it is idle to obtain the IP address.
2. Enter the IP address (e.g., <http://192.168.0.10> or 192.168.0.10) in the address bar of web browser on your PC and then press **Enter**.
3. Enter the user name and password in the login page.

The default login user name is admin (case-sensitive) and the password is admin (case-sensitive).

4. Click on **Directory->Local Directory**.
5. Click **Browse** to locate the contact list file from your local system.



6. Click **Import XML** to import the contact list.

The web user interface prompts "The original contact will be covered, Continue?".

7. Click **OK** to complete importing the contact list.

#### For W52P/W56P/W60 IP DECT phones:

1. Press the **OK->Status->Base** on the handset when it is idle to obtain the IP address.
2. Enter the IP address (e.g., http://192.168.0.10 or 192.168.0.10) in the address bar of web browser on your PC and then press **Enter**.
3. Enter the user name and password in the login page.  
The default login user name is admin (case-sensitive) and the password is admin (case-sensitive).
4. Click on **Directory->Local Directory**.
5. Select the desired handset from the pull-down list of **Import to**.

- Click **Browse** to locate a contact list file from your local system.



- Click **Import** to import the contact list.
- Click **OK** to complete importing the contact list.

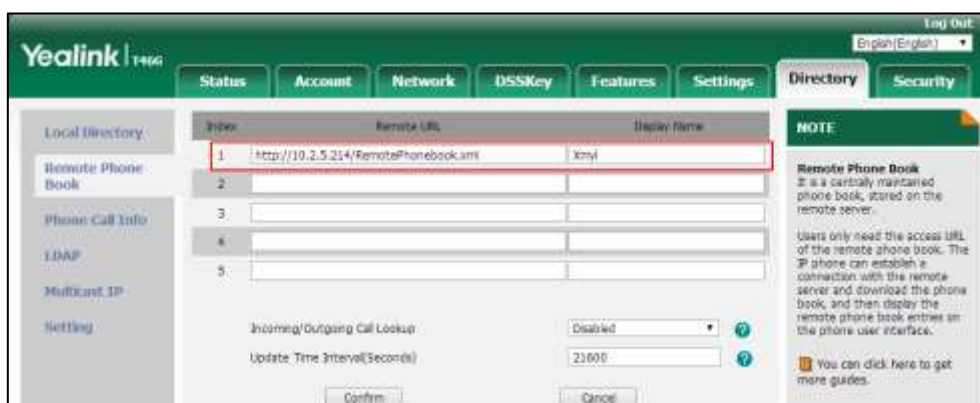
## Configuring an Access URL for Remote Phone Book via Web User Interface

The following takes the SIP-T46G IP phone running firmware version 81 as an example.

### To configure an access URL for remote phone book via web user interface:

- Press the **OK** key on the phone when it is idle to obtain the IP address.
- Enter the IP address (e.g., http://192.168.0.10 or 192.168.0.10) in the address bar of web browser on your PC and then press **Enter**.
- Enter the user name and password in the login page.  
The default login user name is admin (case-sensitive) and the password is admin (case-sensitive).
- Click on **Directory->Remote Phone Book**.
- Enter the access URL in the **Remote URL** field.

- Enter the name (e.g., Xmyl) in the **Display Name** field.



- Click **Confirm** to accept the change.

## Uploading Phonebook Files Using the Configuration File

To upload the two phonebook files using the configuration file:

- Add/Edit the parameters in the configuration file.

The following table shows the parameters information:

Parameters	Description	Value
For SIP-T58V/T58A/T56A/SIP VP-T49G/SIP-T54S/T52S/T48S/T46S/ T42S/T41S/T40P/T40G/T29G/T27P/T 27G/T23P/T23G/T21(P) E2/T19(P) E2/CP860/CP920/CP960 IP phones: <b>local_contact.data.url</b> For W52P/W56P/W60 IP DECT phones: <b>handset.X.contact_list.url</b> (X ranges from 1 to 5)	It specifies the access URL of the local contact file.	URL
<b>remote_phonebook.data.X.url</b> (X ranges from 1 to 5)	It specifies the access URL of the remote phonebook. <b>Note:</b> It is not applicable to SIP-T20P IP phones.	URL
<b>remote_phonebook.data.X.name</b> (X ranges from 1 to 5)	It specifies the display name of the remote phonebook item. <b>Note:</b> It is not applicable to SIP-T20P IP phones.	String

The following sample shows the configuration of the local phonebook and remote

phonebook in the configuration file:

```
local_contact.data.url = http://10.2.5.214/LocalPhonebook.xml
```

```
remote_phonebook.data.1.url = http://10.2.5.214/RemotePhonebook.xml
```

```
remote_phonebook.data.1.name = Xmyl
```

2. Upload the configuration file and two phonebook files to the root directory of the provisioning server and perform auto provisioning to download the two phonebook files for Yealink IP phones.

For more information on auto provisioning, refer to the corresponding auto provisioning guide:

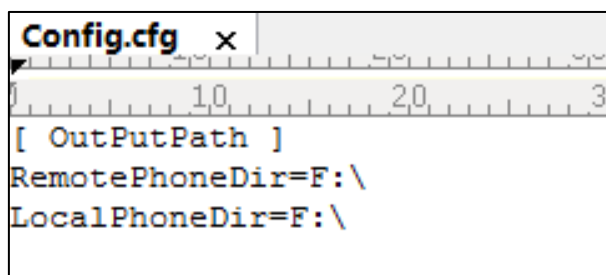
For Yealink IP phones running old firmware version (old auto provisioning mechanism), refer to [Yealink SIP-T2 Series\\_T19\(P\) E2\\_T4\\_Series\\_CP860\\_W56P\\_IP\\_Phones\\_Auto\\_Provisioning\\_Guide](#).

For Yealink IP phones running new firmware version (new auto provisioning mechanism), refer to [Yealink SIP IP Phones Auto Provisioning Guide\\_V81](#).

## Appendix A: Managing the Config.cfg File

The Config.cfg file is used to specify the stored path for the remote phonebook and local phonebook. It is especially useful for the users who do not have write permissions for disk C:. You can open and edit the Config.cfg file with a text editor such as UltraEdit.

The following figure shows an example of the Config.cfg file:



In the above example, the remote phonebook and local phonebook will be saved to the specified path: F root directory "F:\".

You can modify the stored path for remote phonebook or local phonebook on the right of the equal sign. If it is left blank, the remote phonebook or local phonebook will be automatically saved to the default path: C root directory "C:\".